

# WATER METER

## Leak-Detection

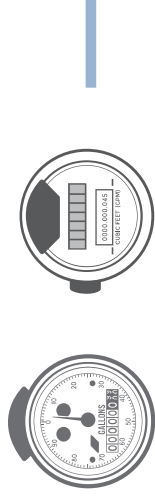


### Is Your Bill Higher Than Normal?

Sometimes your first indication that you've used a lot of water is a high bill. Sometimes you can remember when you left the faucet on, refilled the pool, or ran the sprinkler a lot. Other times, you have no idea where the water went, and you may suspect a water leak. Leaks can be continuous or intermittent, such as a leaking pipe or a toilet that runs, stops, then runs again. A valve in a sprinkler system closes, but can sometimes get stuck open.

Use this simple procedure to check for leaks in your home!

- 1 Turn off all water inside and outside of the property.
- 2 Locate your Water Meter (see diagrams below). Check for an immediate leak by observing if the meter is still spinning or showing a "FLOW" indication. If no spinning or indication of FLOW is present, record your exact reading.
- 3 Wait 1 hour and read the meter again. Is water still flowing? Be sure to check your numbers over time to compare. Double check all possible water outlets and listen for running water, seek out a plumber if a leak cannot safely be identified.



### What's your read?

Check your meter and record your reading below.

Reading your meter periodically and recording results helps in water conservation practices and identifying water leaks early.

—									0
—									

